



# E200 Series

Thermally Broken Aluminum Single Hung Window ~ C-50\*

01-27-2016



## STANDARD FEATURES

- 3/4" insulated glass
- Operating sash has a full width lift handle
- Gravity latch. When the window is all the way down, the latch snaps into a locked position
- Block & tackle balance system (Class 3 Balancers)
- Fully thermally-broken (frame & sash)
- 1/2 extruded aluminum screen with wire mesh cloth
- 2604 Powder Coat finish (equal to 50% kynar). Color choices include:
  - 11 "Populars"
  - 19 "Impressives"
  - 7 "Resembles"
  - Unlimited Custom colors

## OPTIONS

- Varying glass thickness to achieve higher STC ratings (i.e. 1/4" laminated with 1/8" annealed)
- Add Heavy-Duty Class 5 balancers to withstand extensive use.
- Choose from a multitude of Quaker's own energy-efficient glazing packages such as: EnergyBasic, Energy 3S, EnergyMax, EnergyPlus, EnergyGrey, EnergyBronze or EnergyObscure
- Other glazing choices include green or blue tint, tempered (safety) glass, laminated, spandrel and many more
- Grids available upon request. Choose *internal lites* (between the glass) or *flat applied lites* (SDL) for a simulated divided lite appearance
- Fiberglass screen cloth in lieu of aluminum wire mesh
- Sweep locks can be added in place of gravity latches
- Finless frame for retrofit, panning, or receptor applications
- Optional finishes include: **2605** (equal to 70% kynar), and clear & color *anodic*

## BENEFITS

- Achieves amazing U-Values when teamed with Quaker's best glazing packages, a rare feat for aluminum windows
- 2 3/8" frame depth provides a solid, sturdy structure
- 3/4" insulated glass allows you to vary your glass thicknesses and achieve high sound transmission control (STC) ratings
- Drop in glazing reduces chance of air/water infiltration
- Mates with E200 series picture window and existing panning, receptor and mull systems
- Available with or without fin system

## DETAILS

### Test Results

Uniform Structural Load (PSF)	75.19
Air Infiltration CFM/Foot @ 25 mph	0.05
Water Resistance Test Pressure (PSF)	7.52
Uc @ 15 MPH (BTU/HR/F/FT2)	.42 (with optional Low-E & argon)
CRF (Condensation Resistance)	55

\* - C-50 is a certified A.A.M.A. test ratings

Quaker Windows & Doors ~ PO Box 128 ~ 504 Hwy. 63 South ~ Freeburg, MO 65035  
(Phone) 1-800-347-0438 ~ (Fax) 573-469-4151

www.quakercommercialwindows.com





# E300, E303, E350, E500 Horizontal Sliding Windows

01-27-2016



## STANDARD FEATURES

- Single slide sash glazed with 1" insulated glass
- 1/2 extruded aluminum screen with aluminum wire mesh
- Integral pull rail at interlock with sweep lock
- FA, AF, or AFA configurations (A = "active" or operating panel)
- Sturdy rollers allow sash to glide with ease
- Extruded nailing fin (can be removed for retrofit panning or receptor applications)
- Powder coat paint finish (equal to 50% Kynar)
- Any painted color is available. Choose from:
  - 11 "Populars", 19 "Impressives" or 7 "Resembles" Colors
  - or tell us what custom color you want



**Holiday Inn - Anaheim, California**

## OPTIONS

- Energy efficient glass packages include: EnergyBasic, Energy 3S, EnergyPlus, EnergyMax, EnergyGrey, EnergyBronze, EnergyObscure
- Other glass options include but not limited to tempered (safety), laminated, tints, reflective, solar and spandrel.
- Grids available upon request. Choose *internal lites* (between the glass) or *applied lites* (SDL) for a simulated divided lite appearance
- 2605 Powder Coat finish (equal to 70% kynar)
- Anodized coatings available
- Finless frame for retrofit, panning or receptor applications
- Fiberglass screen cloth in lieu of aluminum wire mesh

## DETAILS

	E300/E303	E350	E500
AAMA Rating*	CW-50	CW-50	AW-50
Uniform Structural Load (PSF)	75.19	75.19	75.19
Air Infiltration CFM/Foot @ 25 mph	0.10	0.10	Contact Quaker
Water Resistance Test Pressure (PSF)	7.52	10.03	10.00
U-Value (with EnergyBasic)	.42	.42	.42
CRF (Condensation Resistance)		Contact Quaker	

## BENEFITS

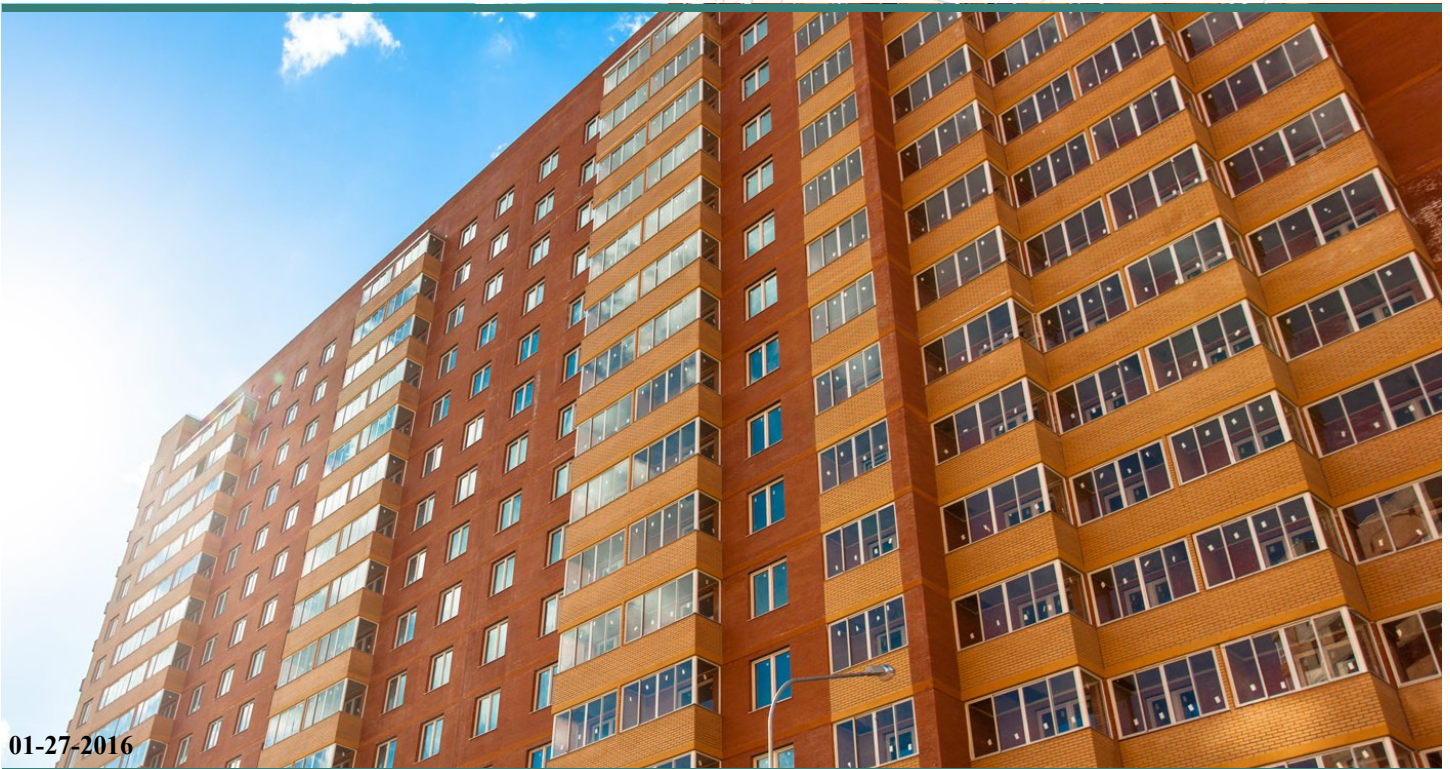
- Two meeting rails to choose from based on your performance and aesthetic preference:
  - E300, E303 and E350 Series all integrate a smooth meeting rail
  - E500 Series has a heavier meeting rail for superior performance yet it is visually unobtrusive
- Two sill heights:
  - E300 & E303 Series contain a standard sill height design that is a tremendous air and water barrier
  - E350 & E500 Series take it that design one step further, with an even taller interior sill that dams out water and air, even under the most stringent testing conditions
- All models are perfect for multiple story projects
- 1" insulated glass allows you to vary your glass thicknesses and achieve high sound transmission control (STC/OITC) ratings
- Mates with picture windows from Quaker's E-Series of products
- Numerous panning, receptor and mull systems available
- Can be structured with or without a fin system.



# E600 Series Venting Products

Push-Out Casement • Pull-in Casement • Push-Out Awning • Pull-In Hopper • Fixed

The E600 has every angle covered. Superior structural performance, industry leading thermal capabilities and modern-day visuals.





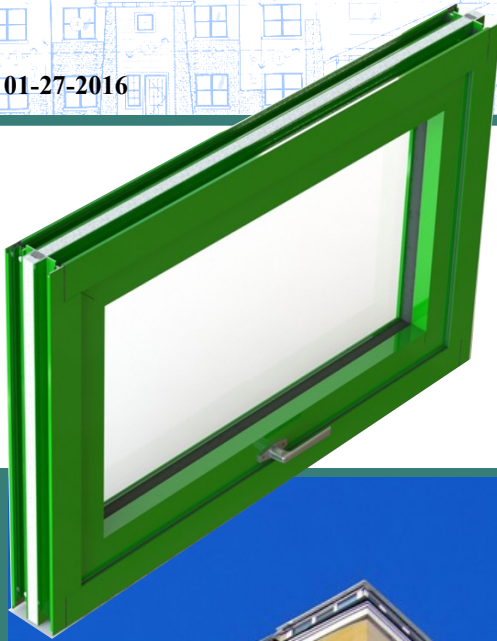
# E600 Series



Venting windows from our Emerge family of products

- Aluminum Casement Window (push-out or pull-in) - AW-70 Rating\*
- Aluminum Awning Window (push out) - AW-70 Rating\*
- Aluminum Hopper Window (pull in) - AW-70 Rating\*
- Aluminum Fixed Window

01-27-2016



## QUAKER ADVANTAGES

- Sturdy & solid build with .094 gauge 6063-T6 aluminum.
- Sash glazed with 1" insulated glass
- Narrow sightlines for a contemporary look and feel
- Frame & sash contains a time-tested, thermally-break system, made better by an extra wide setting for unrivaled thermal results.
- Any color is available with Quaker's 2604 powder-coat finish (equal to 50% Kynar)
  - \* 11 *Populars*
  - \* 19 *Impressives*
  - \* 7 *Resembles*
  - \* Custom color matching capability
- Competitive warranty

## STANDARD BENCHMARKS

- 3 1/4" main frame
- Insulated glass spacer system assures a great seal and is an excellent thermal barrier
- Q-Lon Bulb weatherstripping
- Push-out and pull-in swing operation casement model
- Push out swing operation on awning model
- Pull in operation on hopper model

## OPTIONS

- Optional glazing stop to accept triple glazed I.G.
- Energy-efficient glass packages to fit any climate and location; EnergyBasic, Energy 3S, EnergyPlus, EnergyMax, EnergyObscure, EnergyBronze and EnergyGrey
- Other glass options include: privacy (opaque) glass, safety (tempered) glass, tinted glass, laminated, spandrel, mirrored and more
- Grids: *internal lites* (between the glass) or *applied lites* (SDL) for a simulated divided lite appearance
- Finish: 2605 Powder Coat finish (equal to 70% Kynar) and a full range of Anodized finishes
- Variable glass pane thicknesses are available in order to achieve higher sound transmission control (STC) ratings
- Mates with matching E600 picture window, as well as existing panning, receptor and mull systems

\* Test ratings shown are NAMI certified, and based on gateway test sizing  
Quaker reserves the right to implement design changes without notice.

Quaker Windows & Doors ~ Freeburg, MO 65035  
(Phone) 1-800-347-0438 (Fax) 573-469-4151  
www.quakercommercialwindows.com



Venting windows from our Emerge family of products

- Aluminum Casement Window (push-out or pull-in) - AW-70 Rating\*
- Aluminum Awning Window (push out) - AW-70 Rating\*
- Aluminum Hopper Window (pull in) - AW-70 Rating\*
- Aluminum Fixed Window

01-27-2016

## BENEFITS

- Deeper sash pocket for triple glazing when necessary
- Extra-wide thermal-break provides unmatched thermal performance compared to similar windows on the market.
- Azo-braiding thermal-break system uses proven technology to eliminate dry shrink
- Combination of Monticelli heavy-duty corner keys and silicone injected corner key passages ensures the mitered corners will perform at ultimate structural and thermal levels
- Hinges allow for 90° opening and 180 lbs. of weight capacity for full ventilation capabilities, even on larger windows.
- Hidden exterior weatherstripping projects a cleaner aesthetic
- Sash design accommodates deep SDL profiles
- Low VOC powder paint combined with recycled aluminum and glass offer “Green” rewards and “LEED” point possibilities
- Choose from *Push-Out* or *Pull-In* casement models for the operation you want

## DETAILS

### E600 Push-Out/Pull-in Casement (AW-70)

Uniform Structural Load (PSF)	105.0
Air Infiltration CFM/Foot @ 50 mph	Contact Quaker
Water Resistance Test Pressure (PSF)	12.00
Uc @ 15 MPH (BTU/HR/F/FT2)	0.33 - 0.37 **
SHGC (Solar Heat Gain Coefficient)	0.15 - 0.21 **

### E600 Push-Out Awning (AW-70)

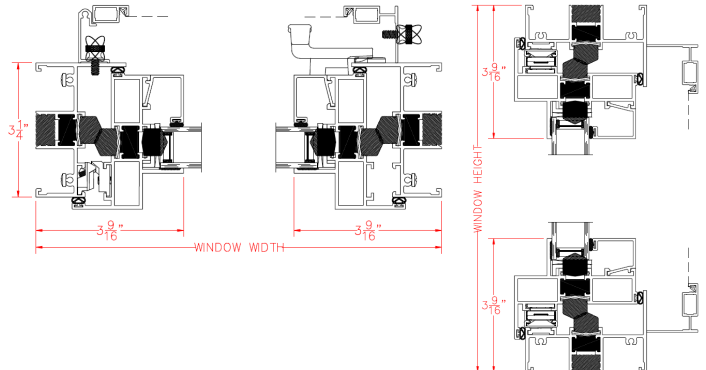
Uniform Structural Load (PSF)	105.0
Air Infiltration CFM/Foot @ 50 mph	Contact Quaker
Water Resistance Test Pressure (PSF)	12.00
Uc @ 15 MPH (BTU/HR/F/FT2)	0.33 - 0.37 **
SHGC (Solar Heat Gain Coefficient)	0.15 - 0.21 **

### E600 Pull-in Hopper (AW-70)

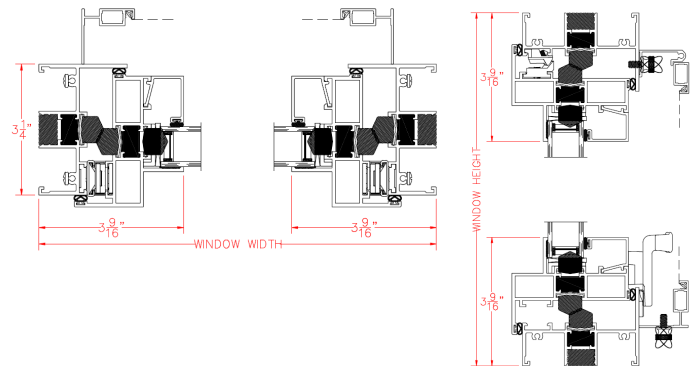
Uniform Structural Load (PSF)	105.00
Air Infiltration CFM/Foot @ 50 mph	Contact Quaker
Water Resistance Test Pressure (PSF)	12.00
Uc @ 15 MPH (BTU/HR/F/FT2)	0.34 - 0.37 **
SHGC (Solar Heat Gain Coefficient)	0.15 - 0.21 **

\* Test ratings shown are NAMI certified, and based on gateway test sizing.  
 \*\* Ranges based on variations in glazing  
 Quaker reserves the right to implement design changes without notice.

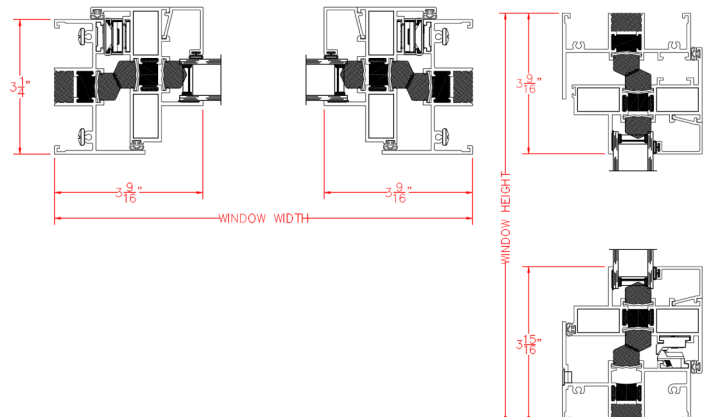
## E600 Push Out Casement



## E600 Push Out Awning



## E600 Pull In Hopper





# ESCAPE WINDOW

Quaker's T600 Series has a standard Single Hung design and operation with added swing-open capabilities for maximum egress.

Perfect for non-adjustable brick opening that needs egress compliance.

Excellent alternative to openings too large to accommodate horizontal sliders.

Available with Quaker's own factory-applied security screen system.

Accommodating to single or twin window units

Competitively priced to fit any budget in any market.

Single point latch hardware with heavy-duty butt hinges for reliable operation at all times, especially when it's really needed.

Affords matching sightlines in spite of different operational set-up.

An effective and sound choice on two fronts: can reach egress requirements AND achieve exceptional thermal values.



5-6-2015