



# H300 Series

*Thermally-broken Aluminum Single Hung Window - HC-40\**

01-28-2016

## STANDARD FEAT.

- Sash glazed with 5/8" insulated glass
- 3 1/4" frame depth provides a solid, sturdy structure
- Extruded aluminum screen with wire mesh cloth
- Operating sash has a full width lift handle
- Tall interior step sill dams out water & air
- Gravity latch locking system. When the window is all the way down, the latch snaps into a locked position
- Finless frame for retrofit, panning, or receptor applications
- Has received approval from National Park Service in many historical application projects across the United States
- Distinctive design offers symmetrical sightlines
- 2604 Powder Coat finish (equal to 50% kynar). Color choices include:
  - 11 "Populars"
  - 19 "Impressives"
  - 7 "Resembles"
 and literally any custom color you want

## OPTIONS

- Choose from a multitude of Quaker's own energy-efficient glazing packages such as: EnergyBasic, Energy 3S, EnergyMax, EnergyPlus, EnergyGrey, EnergyBronze or EnergyObscure
- Other glazing choices include green or blue tint, tempered (safety) glass, laminated, spandrel and many more
- Internal (between-the-glass) or Applied (simulated divided) grids
- Fiberglass screen mesh in lieu of aluminum wire mesh
- 2605 Powder Coat finish (equal to 70% kynar)
- Anodized finishes
- Mates with matching picture window
- Decorative ogee blocks to simulate historical appearance
- Multiple panning, receptor and mull systems are available for specialized applications

## DETAILS

**Test Results**

Uniform Structural Load (PSF)	60.15
Air Infiltration CFM/Foot @ 50 mph	.20
Water Resistance Test Pressure (PSF)	6.00
Uc @ 15 MPH (BTU/HR/F/FT2)	.47 with Low-E
CRF (Condensation Resistance)	53
STC (Sound Transmission) w/standard glazing	Contact Quaker



*Hard Rock Hotel  
(formerly Carbon & Carbide Building)  
Chicago, IL*



\* - HC-40 is a certified A.A.M.A. test rating







# H500 Series

Thermally-broken Aluminum Single Hung Window - AW-50\*

01-28-2016

## STANDARD FEATURES

- Sash glazed with 5/8" insulated glass.
- 3 1/4" frame depth provides a solid, sturdy structure.
- Extruded aluminum screen with wire mesh cloth.
- Operating sash has a full width lift handle.
- Tall interior step sill dams out water & air.
- Gravity latch locking system. When the window is all the way down, the latch snaps into a locked position.
- Finless frame for retrofit, panning, or receptor applications.
- Has received approval from National Park Service in many historical application projects across the United States.
- Distinctive design offers symmetrical sightlines.
- 2604 Powder Coat finish (equal to 50% kynar). Color choices include:
  - 11 "Populars"
  - 19 "Impressives"
  - 7 "Resembles"
 and literally any custom color you want

## OPTIONS

- Choose from a multitude of Quaker's own energy-efficient glazing packages such as: EnergyBasic, Energy 3S, EnergyMax, EnergyPlus, EnergyGrey, EnergyBronze or EnergyObscure
- Other glazing choices include green or blue tint, tempered (safety) glass, laminated, spandrel and many more
- Internal (between-the-glass) or Applied (simulated divided) grids.
- Fiberglass screen mesh in lieu of aluminum wire mesh.
- 2605 Powder Coat finish (equal to 70% kynar)
- Anodized coatings
- Mates with matching picture window.
- Decorative ogee blocks to simulate historical appearance
- Multiple panning, receptor and mull systems are available for specialized applications.

## DETAILS

### Test Results

Uniform Structural Load (PSF)	75.19
Air Infiltration CFM/Foot @ 50 mph	.17
Water Resistance Test Pressure (PSF)	10.03
Uc @ 15 MPH (BTU/HR/F/FT2)	.47 with Low-E
CRF (Condensation Resistance)	53
STC (Sound Transmission) w/standard glazing	Contact Quaker



**Hard Rock Hotel**  
(formerly Carbon & Carbide Building)  
Chicago, IL



\* - HC-40 is a certified A.A.M.A. test rating







Historical  
SERIES



Quaker welcomes the

# H600 Series Venting Product

to our Historical Replication product family

Casement • Awning • Fixed • Floating Operator

The H600 trumps our current venting products and immediately vaults Quaker to the top of the market. You'll find it's superior on several levels:

Structurally • Thermally • Historically • Functionally • Aesthetically




01-28-2016





# H600 Series

01-28-2016

Venting windows for our Historical family of products 

- Thermally Broken Aluminum Casement Window - AW-50 Rating\*
- Thermally Broken Aluminum Awning Window - AW-50 Rating\*
- Thermally Broken Aluminum Floating Operating Window



**Junior House Lofts  
Milwaukee, WI**

## STANDARD FEATURES

- 3 1/4" thermally-broken main frame.
- Sturdy & solid build with .094 gauge 6063-T6 aluminum.
- Sash glazed with 1" insulated glass
- Outswing operation on both casement and awning styles
- Roto or Cam-handle operation available
- Truth® Tempo Series heavy-commercial locking system
- Extra wide thermal-break implemented into main frame for excellent thermal performance
- Any color is available with Quaker's 2604 powder-coat finish (equal to 50% Kynar)
  - \* 11 Populars
  - \* 19 Impressives
  - \* 7 Resembles
  - \* Custom color matching capability

## OPTIONS

- Choose from a multitude of Quaker's own energy-efficient glazing packages such as: EnergyBasic, Energy 3S, EnergyMax, EnergyPlus, EnergyGrey, EnergyBronze or EnergyObscure
- Other glazing choices include green or blue tint, tempered (safety) glass, laminated, spandrel and many more
- Grids: **internal lites** (between the glass) or **applied lites** (SDL) for a simulated divided lite appearance
- Finish: 2605 Powder Coat finish (equal to 70% Kynar) and a full range of Anodized finishes.
- Variable glass pane thicknesses are available in order to achieve higher sound transmission control (STC) ratings
- Mates with matching H600 picture windows (direct set or sash set model) and existing panning, receptor and mull systems

\* Test ratings shown are NAMI certified.  
Quaker reserves the right to implement design changes without notice.

Quaker Windows & Doors ~ PO Box 128 ~ 504 Hwy. 63 South ~ Freeburg, MO 65035

(Phone) 1-800-347-0438

(Fax) 573-469-4151


www.quakercommercialwindows.com





# H600 Series

01-28-2016

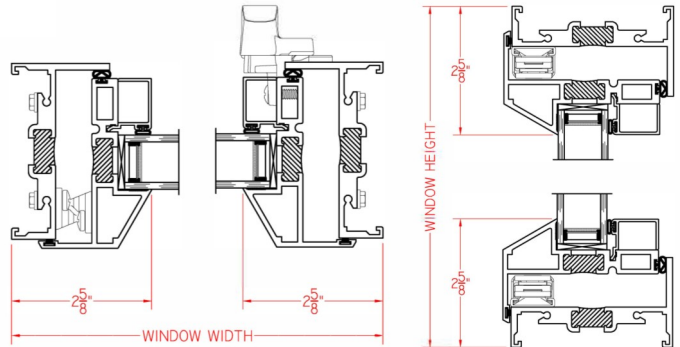
Venting windows for our Historical family of products 

- Thermally Broken Aluminum Casement Window - AW-50 Rating\*
- Thermally Broken Aluminum Awning Window - AW-50 Rating\*
- Thermally Broken Aluminum Floating Operating Window

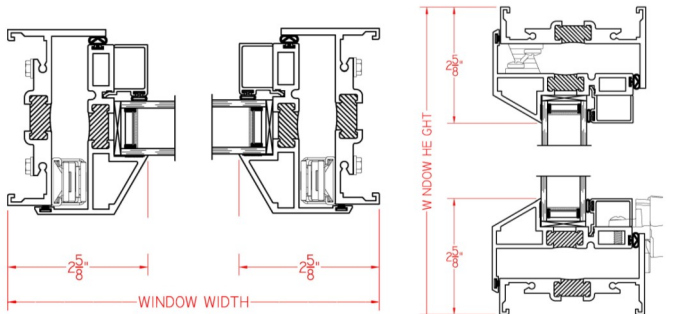


## Mallory Hall at Virginia Military Academy Lexington, VA

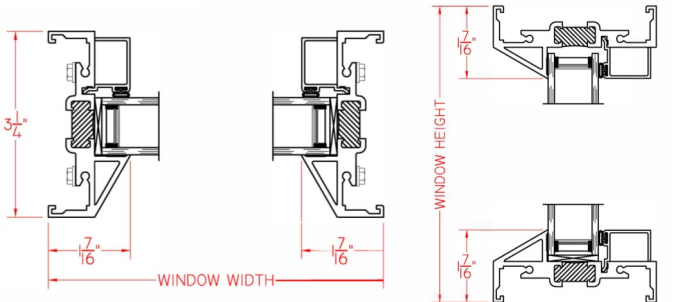
### H600 Casement



### H600 Awning



### H600 Picture Window narrow sightline



### BENEFITS

- Historically-correct profiles and sightlines
- Sash design accommodates deep SDL profiles
- Wire frame and floating operator capabilities
- Aided by heavy-duty corner keys, sash and main frame joints show neatly, won't sag and are designed to last.
- Hidden exterior weatherstripping projects a cleaner aesthetic
- Unmatched hardware functionality courtesy of Truth<sup>®</sup> Tempo Series system.
- All H600 operating and fixed styles are available with or without nailing fin thus each can be utilized in replacement or new construction applications
- Superior thermal performance ranges when matched against similar windows on the market

### DETAILS

#### H600 Casement (AW-50)

Uniform Structural Load (PSF)	75.0
Air Infiltration CFM/Foot @ 50 mph	<0.01
Water Resistance Test Pressure (PSF)	10.00
Uc @ 15 MPH (BTU/HR/F/FT2)	Contact Quaker

#### H600 Awning (AW-50)

Uniform Structural Load (PSF)	75.19
Air Infiltration CFM/Foot @ 50 mph	0.05
Water Resistance Test Pressure (PSF)	10.03
Uc @ 15 MPH (BTU/HR/F/FT2)	Contact Quaker

\* Test ratings shown are NAMI certified.  
Quaker reserves the right to implement design changes without notice.

Sash Set Picture Window not shown. Contact Quaker for cut drawing.

