



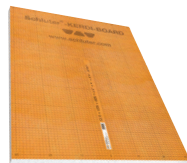
Schluter®-Countertop System



Substrate & Seaming

1 Schluter®-KERDI-BOARD

Extruded polystyrene foam panels are the perfect substrate for tiled countertops.



- Lightweight and easy to cut
- Waterproof and dimensionally stable
- Adheres directly to base cabinets
- Ready to tile

2 Schluter®-KERDI-BAND

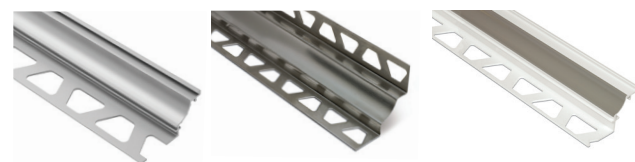
Waterproofing strip used to seal countertop/backsplash transitions.



Countertop/Backsplash

3 Schluter®-DILEX-AHK/-EHK/-PHK

Cove-shaped profiles are the ideal solution for treating countertop/backsplash transitions.



- Eliminates the need for caulking
- Easy to clean and hygienic
- Matching inside and outside corners and end caps available
- Large selection of materials, finishes, and colors

Alternative:



Schluter®-DILEX-EKE

DILEX-EKE provides a straight, uniform, discreet joint eliminating caulking at countertop/backsplash transitions. Available in a variety of colors to match grout.

Sink Rails

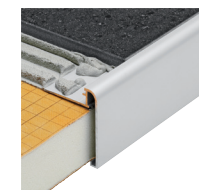
4 Schluter®-RONDEC-CT

Eliminates the need for special ceramic tile trim pieces to finish the facing of your tiled countertop.



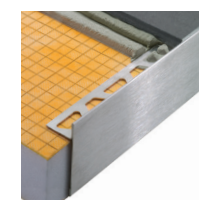
- Covers the assembly below the tile
- Recessed section for bonding field tile or accent tile
- Matching inside and outside corners available
- Large selection of finishes

Alternatives:



Schluter®-RONDEC-STEP

RONDEC-STEP is an anodized aluminum sink rail profile with a rounded top edge. A wide variety of finishes, as well as matching inside and outside corners are available.



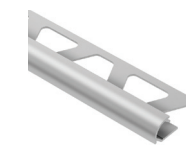
Schluter®-SCHIENE-STEP

SCHIENE-STEP is a brushed stainless steel sink rail profile with a thin, discreet top edge. Matching inside and outside corners, and connectors are available.

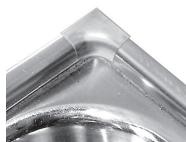
Tiled-under Sinks & Edge-protection

5 Schluter®-RONDEC

Bullnose profile finishes and protects tile edges.



- Finishes the tile edges around your backsplash
- Matching inside and outside corners and end caps available
- Large selection of materials, finishes, and colors



- Specialized sink corners to produce tiled-under sink for easy cleaning

Alternative:



Schluter®-QUADEC

QUADEC finishes and protects tile edges. The square shape of the profile creates a clean, modern look. Its universal corner piece can be used to form an inside or outside corner, or as an end cap.