

EFFECTIVE
JULY
2014

Kabinart

ALL WOOD CABINETS



Price Book and Specifications

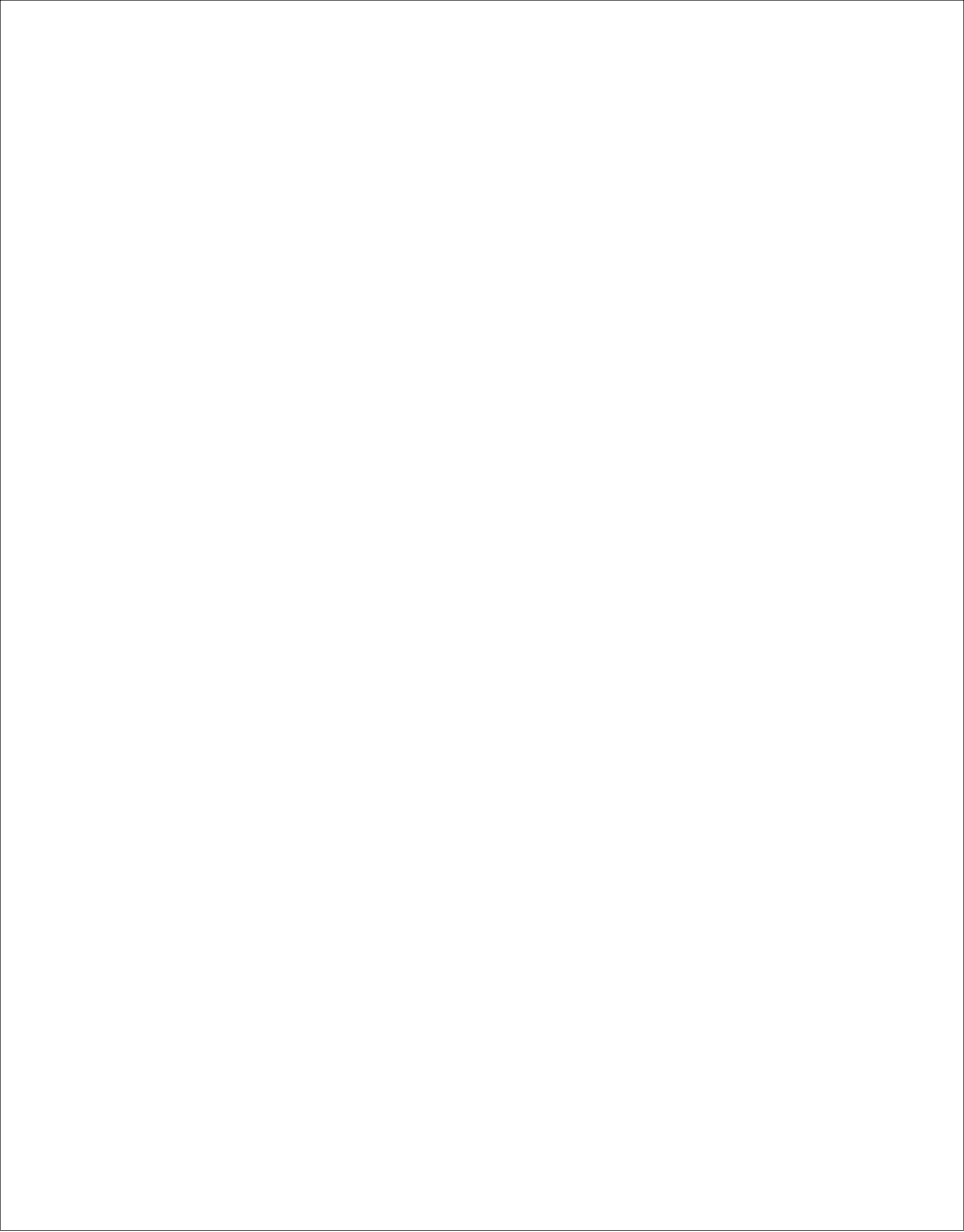


Table of Contents

KITCHEN WALL CABINETS

Wall Cabinets 42" High	W-2
Wall Cabinets 39" High	W-2
Wall Cabinets 36" High	W-4
Wall Cabinets 33" High	W-4
Wall Cabinets 30" High	W-6
Wall Cabinets 27" High	W-6
Wall Cabinets 24" High	W-8
Wall Cabinets 21" High	W-8
Wall Cabinets 18" High	W-10
Wall Cabinets 15" High	W-10
Wall Cabinets 12" High	W-12
Refrigerator Wall Cabinets 24" Deep	W-14
Blind Corner Wall Cabinets 42" High	W-16
Blind Corner Wall Cabinets 36" High	W-16
Blind Corner Wall Cabinets 30" High	W-18
Blind Corner Wall Cabinets 24" High	W-18
Peninsula Wall Cabinets 30" High	W-20
Peninsula Wall Cabinets 24" High	W-20
Peninsula Wall Cabinets 18" High	W-22
Blind Corner Peninsula Wall Cabinets	W-22
Peninsula Diagonal Wall Cabinets	W-22
Diagonal Corner Wall Cabinets	W-24
Wall Easy Reach Cabinets	W-24
Wall Angle End	W-26
Microwave Cabinets	W-26
Wall Microwave Cabinets	W-28
Appliance Wall Cabinets	W-30
Diagonal Appliance Wall Cabinets	W-30
Drawer Wall Cabinets	W-32
Diagonal Drawer Wall Cabinets	W-32

KITCHEN BASE CABINETS

Base	B-2
Base Cabinets with Sliding Shelf	B-2
Base with Roll Out trays	B-4
Cooktop Base with Roll Out trays	B-4
Sink Bases	B-4
Apron Sink	B-6
Drawer Base	B-6
Three Drawer Base	B-6
Pot and Pan Base	B-6
Two Drawer Base	B-8
Base Warming Drawer	B-8
Short One Drawer Base	B-8
Blind Corner Base	B-10
Base End Cabinet	B-10
Transition Base	B-12
Base Angle Cabinet	B-12
Tray Base	B-12
Tray Base w/Mini Pantry	B-12
Base w/Wastebasket	B-12
Corner Base Island Cabinet	B-14
Base Island Cabinets	B-14
Lazy Susan Base	B-16
Square Corner Easy Reach	B-16

Square Corner Easy Reach with Super Susan	B-16
Diagonal Square Corner Easy Reach with Super Susan	B-16
Lazy Susan Base 33"	B-17
Base Microwave Cabinet	B-17.1
Sink Fronts with Trimmable Stiles	B-18
Corner/Diagonal Sink Fronts	B-18

KITCHEN TALL CABINETS

Utility Cabinets	T-2
Multi-Storage Pantry	T-6
Oven Cabinets	T-8

KITCHEN ACCESSORIES

Molding	A-2
Valances	A-5
Country English Valance	A-6
Corbels	A-6
Spindle Rail and Connecting Posts	A-6
Fillers & Overlay Fillers	A-7
Fluted & Reeded Fillers	A-8
Box Columns	A-9.1
Counter Supports, Bar Brackets	A-10
Post Columns	A-12
Corner Post	A-15
Pedestal Feet	A-15
Overlays, Appliques, Capitals	A-16
Paneling	A-17
Dishwasher Panel Inserts	A-17
Dishwasher End Panels	A-18
Base End Panels	A-18
Refrigerator End Panels	A-18
Skins	A-19
Toe Kick Cover	A-19
Appliance Garages	A-20
Appliance Cabinets	A-20
Cutting Board Knife Tray Kit	A-20
Cutlery Tray Divider	A-20
Lattice Wall Cabinets	A-20
Adjustable Shelving	A-20.2
Organizers	A-21
Plate Display Rack	A-21
Spice Drawer	A-21
Spice Rack	A-21
Stem Glass Holder	A-21
Range Hoods	A-22
Range Hood Ventilation Units	A-26
Range Hood Liners	A-26
Tilt Out Tray	A-27
Wastebasket Kit	A-27
Whatnot Cabinets	A-27
Sliding Shelf Kits	A-28
Shelving	A-28
Sink Front Floor	A-28
Range Panels	A-29
Hutch Ends	A-29

BASE HEIGHT VANITY BASES

Vanity Bases	V-2
Vanity Sink Bases	V-2
Vanity Drawer Bases	V-2
Vanity Three Drawer Bases	V-4
Vanity Sink Cabinets	V-4
Vanity Drawer Sinks	V-6

VANITY BASE CABINETS

Vanity Bases	V-8
Vanity Sink Bases	V-8
Vanity Drawer Bases	V-8
Vanity Drawer Sinks	V-10
Vanity Sink Cabinets	V-10
Vanity Sink Base Inverted	V-12
Vanity Sink Cabinets 16" Deep	V-12

VANITY ACCESSORIES

Tri-View Medicine Cabinets	V-14
Medicine Cabinets	V-14
Toilet Topper	V-14
Vanity Wall Boutique	V-14
Mirror Frame Stock	V-16

BOOKCASES

Bookshelves	V-18
Furniture Bookcases	V-19.1

DESK BASES AND ACCESSORIES

Desk Knee Drawer	V-20
Desk End Panel	V-20
Desk Drawer Base	V-20
Desk File	V-20

MISCELLANEOUS ACCESSORIES

Door Samples	A-30
Drawer Guides	A-30
Drawer Guide Kits	A-30
Literature	A-30
Hinges	A-30
Lazy Susan Hardware	A-30
Shelf Supports	A-31
False Front Brackets	A-31
Door Pad Bumpers	A-31
Screws	A-31
Touch-Up Materials	A-31

DECORATIVE/REPLACEMENT

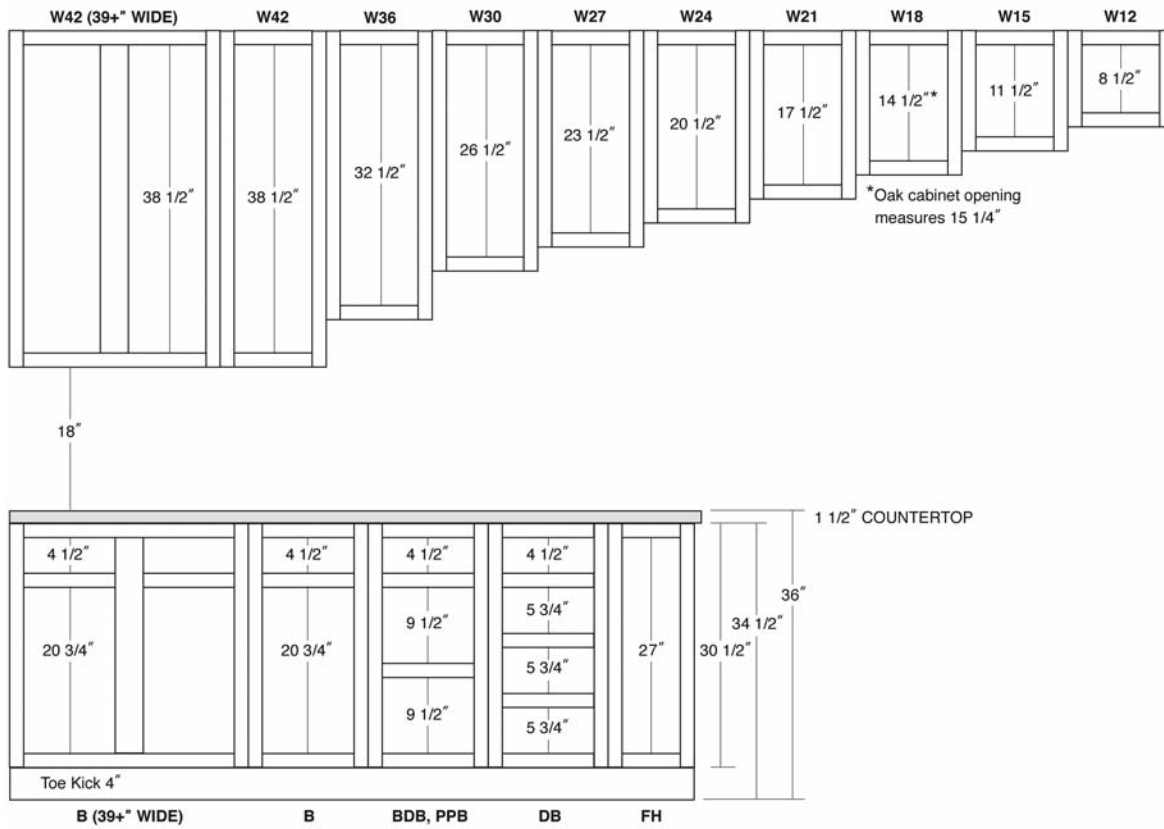
DOOR & DRAWER FRONTS

Wall Cabinet Door	A-32
Base Cabinet Door	A-36
Drawer Front	A-38

Construction Features & Specifications

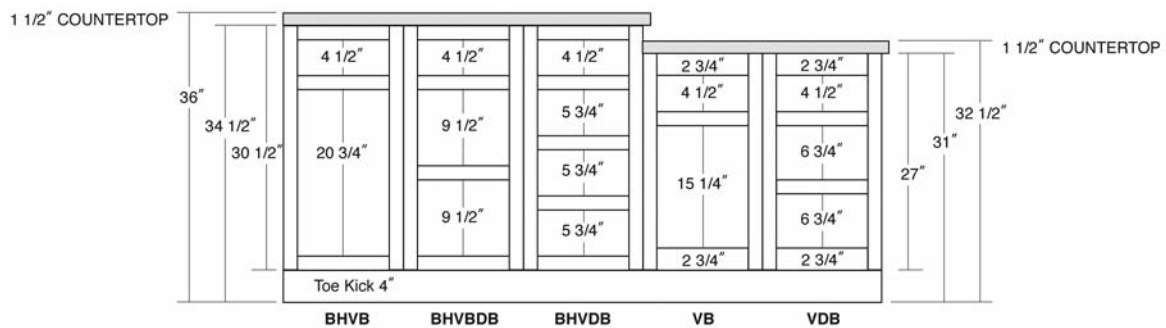
		RTF CABINETS
FACE FRAMES	1 ³ / ₄ " x 3 ³ / ₄ " kiln-dried maple, cherry and oak hardwood.	1 ³ / ₄ " x 3 ³ / ₄ " kiln-dried maple hardwood.
CABINET SIDES	3 ³ / ₈ " laminated plywood.	3 ³ / ₈ " white laminated plywood interior. Finished ends must be specified (no charge).
CABINET TOPS AND BOTTOMS	3 ³ / ₈ " laminated plywood.	3 ³ / ₈ " laminated plywood.
HANGING RAIL	Walls - 4" x 3 ³ / ₈ " plywood concealed hanging rail. Bases - 2 1 ¹ / ₂ " x 1 ¹¹ / ₁₆ " solid wood hanging rail.	Walls - 4" x 3 ³ / ₈ " plywood concealed hanging rail. Bases - 2 1 ¹ / ₂ " x 1 ¹¹ / ₁₆ " solid wood hanging rail.
CABINET BACKS	5 ⁵ / ₃₂ " plywood dadoed into end panel.	5 ⁵ / ₃₂ " plywood dadoed into end panel.
SHELVES	3 ³ / ₄ " laminated plywood shelf, adjustable in both walls and bases.	3 ³ / ₄ " laminated plywood shelf, adjustable in both walls and bases.
DRAWER BOX	5 ⁵ / ₈ " solid wood, furniture dovetailed drawer with plywood bottom dadoed into sides. Soft close, full extension undermount drawer guide.	Hermitage Oak, Valley Oak, Alpine White RTF drawer boxes are as follows: 1 ¹ / ₂ " plywood, four sided with plywood bottom dadoed into sides. Double-captive undermount epoxy-coated drawer guide rated at 100 lbs.
HINGES	Concealed cup hinge with 6-way adjustments and integrated soft-close mechanism.	Concealed cup hinge with 6-way adjustments and integrated soft-close mechanism.
FINISH	12 step catalyzed furniture stain finish, 20 step glaze finish and 22 step painted finish applied to all wood doors and cabinet frames; natural maple laminate interior. See page 13 for details.	22 step catalyzed white finish applied to cabinet frames. Interior surfaces finished in white.
WOOD VENEER FINISHED ENDS	Cabinets with exposed ends must be ordered with wood veneer finished ends at additional cost. Please specify Left (L), right (R) or both (B) ends finished when ordering.	Wood veneer not available. White laminated plywood interior. Finished ends must be specified (no charge).
BASE CABINET CORNER BRACING	2 1 ¹ / ₂ " plywood I-Beam construction, extending from inside top front frame to back hanging rail and dadoed into end panels of base cabinets. Glued and pinned to create stability.	

Cabinet Specifications



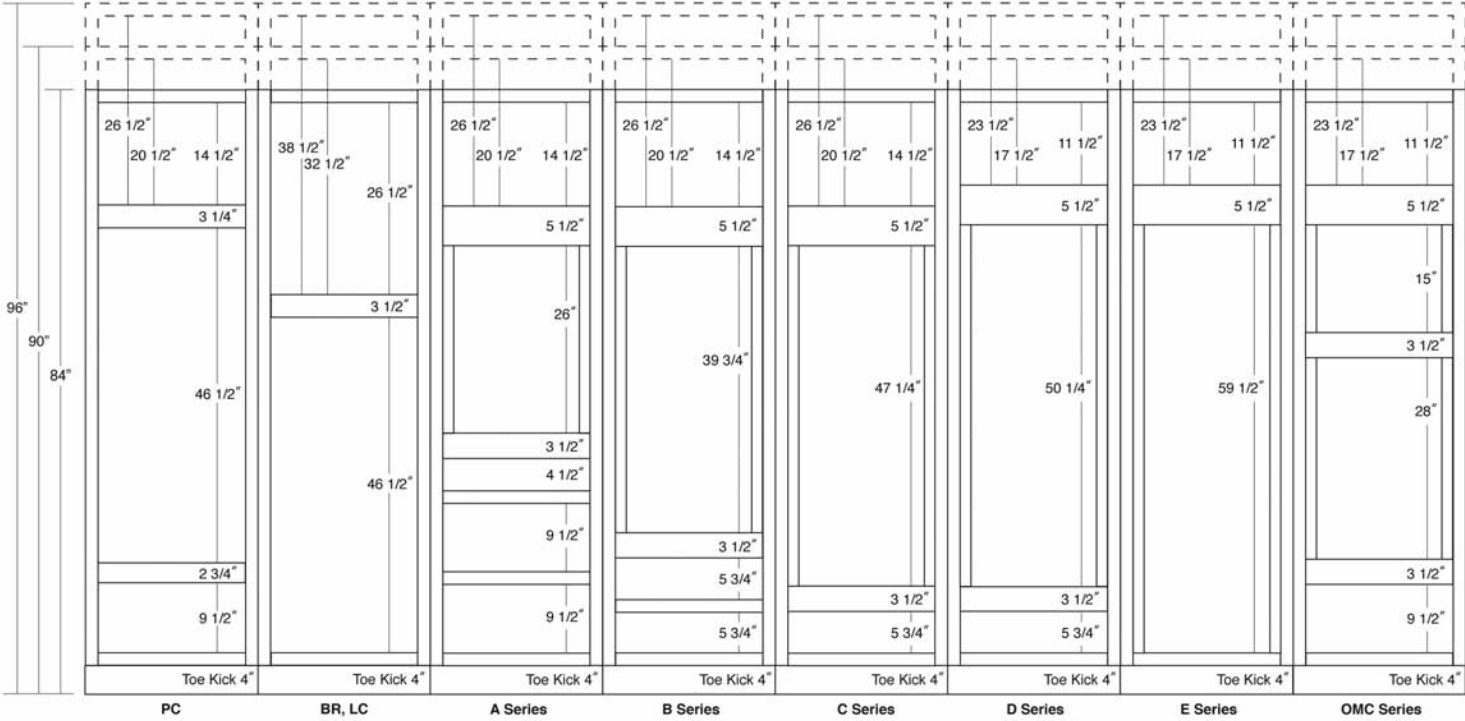
WALL & BASE CABINET SPECIFICATIONS

- Toe Kick depth = 3 5/8"
- Stiles and Rails = 1 3/4" unless otherwise specified
- Vertical Center Stiles = 3 1/2" unless otherwise specified
- All wall cabinets up to 36" Wide have no Center Stile - Full Access
- Vertical Center Stiles on all wall cabinets 39" Wide and over



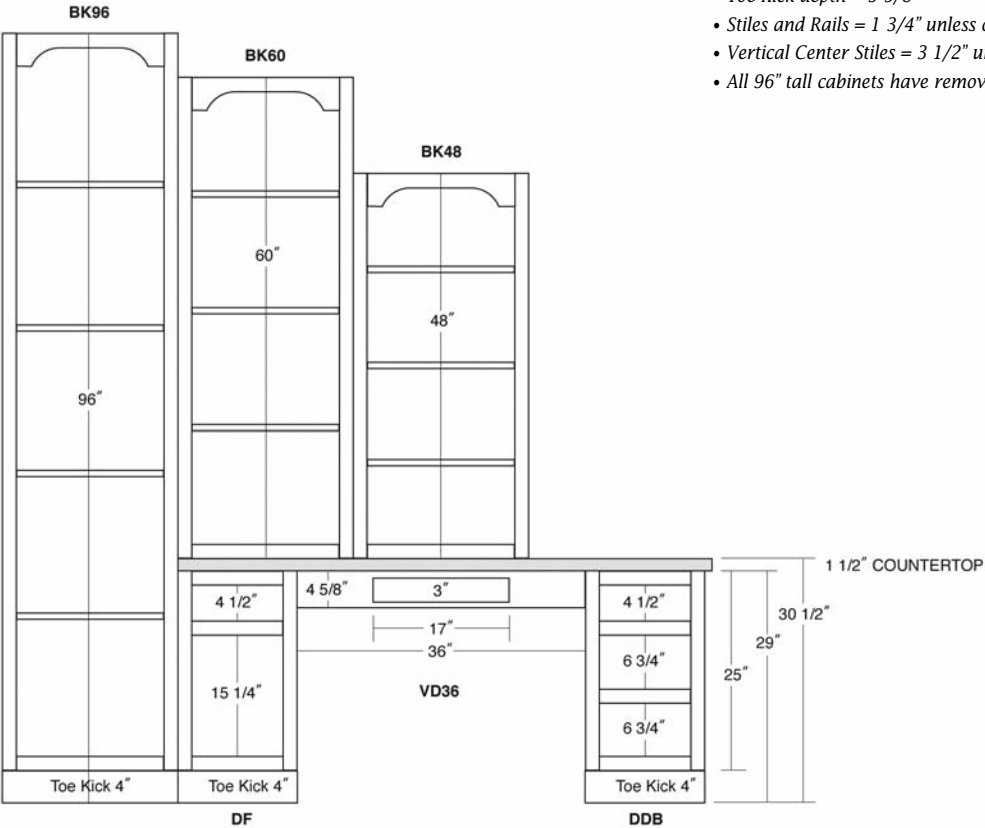
VANITY CABINET SPECIFICATIONS

- Toe Kick depth = 3 5/8"
- Base Height Stiles and Rails = 1 3/4" unless otherwise specified
- Standard Height Stiles and Rails = 1 3/4" unless otherwise specified
- Standard Height Top and Bottom Rails = 2 3/4" unless otherwise specified
- Vertical Center Stiles = 3 1/2" unless otherwise specified



TALL CABINET SPECIFICATIONS

- Toe Kick depth = 3 5/8"
- Stiles and Rails = 1 3/4" unless otherwise specified
- Vertical Center Stiles = 3 1/2" unless otherwise specified
- All 96" tall cabinets have removable toe kicks



DESK CABINET SPECIFICATIONS

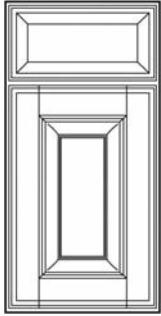
- Toe Kick depth = 3 5/8"
- Stiles and Rails = 1 3/4" unless otherwise specified
- All 96" tall cabinets have removable toe kicks
- Custom size bookcases available by quote

Door Styles

Hand samples showing frame, door and drawer fronts available in all styles. Order HS12.

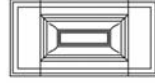
PROVIDENCE CHERRY (PR)

PRICING COLUMN 11



$\frac{3}{4}$ " kiln dried cherry frame with solid cherry raised square panel insert. Full overlay door with 3" stile and rail. 1" drawer head.

Optional 5-Piece Drawer Front Providence Cherry

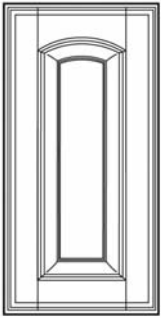


$\frac{3}{4}$ " kiln dried cherry frame with solid cherry raised square panel.

Providence Cherry

NEWCASTLE CHERRY (NC)

PRICING COLUMN 13



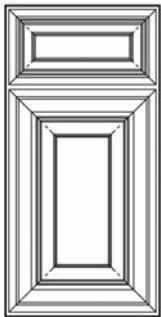
$\frac{3}{4}$ " kiln dried cherry frame with solid cherry soft arch style raised panel insert. Full overlay door with 3" stile and rail.

Wall cabinets feature arch only. Order Providence Base cabinets.

Newcastle Cherry

BRADFORD CHERRY (BR)

PRICING COLUMN 14

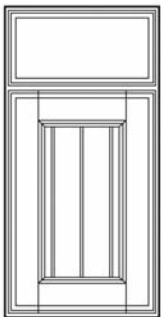


$\frac{3}{4}$ " kiln dried cherry frame with solid cherry raised square panel insert. Full overlay mitered door. 5 piece mitered raised panel drawer head.

Bradford Cherry

COTTAGE CHERRY (TC)

PRICING COLUMN 11



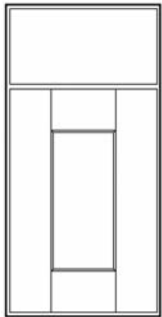
$\frac{3}{4}$ " kiln dried cherry frame with solid cherry reversed raised square panel with bead insert. Full overlay door with 3" stile and rail.

Cottage Cherry

Hand samples showing frame, door and drawer fronts available in all styles. Order HS12.

MISSION CHERRY (MN)

PRICING COLUMN 10



$\frac{3}{4}$ " kiln dried cherry frame with solid cherry reversed raised square panel. Full overlay door with $3\frac{1}{2}$ " stile and rail.

Optional 5-Piece Drawer Front Mission Cherry



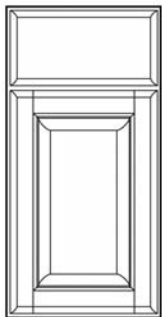
$\frac{3}{4}$ " kiln dried cherry frame with solid cherry reversed raised square panel.

Add \$22.00 List per Drawer

Mission Cherry

WILLIAMSBURG CHERRY (WB)

PRICING COLUMN 10



$\frac{3}{4}$ " kiln dried cherry frame with solid cherry raised square panel insert. Full overlay door.

Williamsburg Cherry

CHERRY HILL CHERRY (CH)

PRICING COLUMN 13



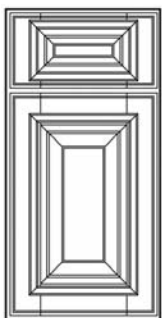
$\frac{3}{4}$ " kiln dried cherry frame with solid cherry soft arch style raised panel insert. Full overlay door.

**Wall cabinets feature arch only.
Order Williamsburg Base cabinets.**

Cherry Hill Cherry

PRESCOT CHERRY (PC)

PRICING COLUMN 14



$\frac{3}{4}$ " kiln dried cherry frame with solid cherry raised square panel. Full overlay $3\frac{1}{2}$ " stile and rail with applied moulding. 5 piece raised panel drawer head.

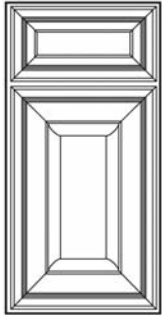
Prescot Cherry

Door Styles

Hand samples showing frame, door and drawer fronts available in all styles. Order HS12.

SARATOGA CHERRY (SA)

PRICING COLUMN 12

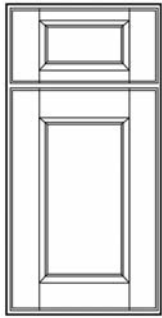


3/4" kiln dried cherry frame with solid cherry raised square panel insert. Full overlay mitered door. 5 piece mitered recessed panel drawer head.

Saratoga Cherry

WAKEFIELD CHERRY (WK)

PRICING COLUMN 9



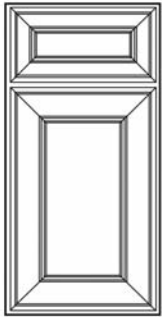
3/4" kiln dried cherry frame with 3-ply cherry plywood flat panel insert. Full overlay door with long inside profile. 5 piece recessed panel drawer head.

Wakefield Cherry

**ACCEPTING ORDERS AFTER
SEPTEMBER 15, 2014**

DOVER CHERRY (DV)

PRICING COLUMN 9



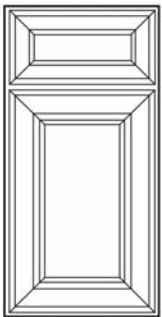
3/4" kiln dried cherry frame with 3-ply cherry plywood flat panel insert. Full overlay door with mitered double bead stile and rail. 5 piece mitered recessed panel drawer head

Dover Cherry

**ACCEPTING ORDERS AFTER
SEPTEMBER 15, 2014**

GEORGETOWN CHERRY (GO)

PRICING COLUMN 14



3/4" kiln dried cherry frame with solid cherry reversed raised square panel. Full overlay door with mitered pillow stile and rail. 5 piece mitered recessed panel drawer head

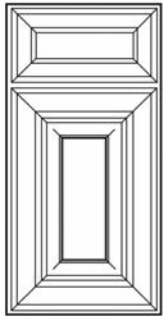
Georgetown Cherry

**ACCEPTING ORDERS AFTER
DECEMBER 1, 2014**

Hand samples showing frame, door and drawer fronts available in all styles. Order HS12.

LEXINGTON CHERRY (LX)

PRICING COLUMN 14



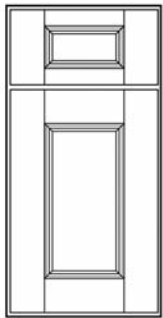
3/4" kiln dried cherry frame with solid cherry raised panel insert. Full overlay door with mitered pillow stile and rail. 5 piece mitered recessed panel drawer head

**ACCEPTING ORDERS AFTER
DECEMBER 1, 2014**

Lexington Cherry

ESSEX CHERRY (EX)

PRICING COLUMN 15



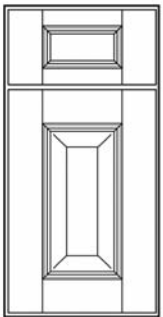
3/4" kiln dried cherry frame with solid cherry reversed raised square panel. Full overlay door with french cut stile and rail. 5 piece french cut mitered recessed panel drawer head

**ACCEPTING ORDERS AFTER
NOVEMBER 1, 2014**

Essex Cherry

OXFORD CHERRY (MH)

PRICING COLUMN 15



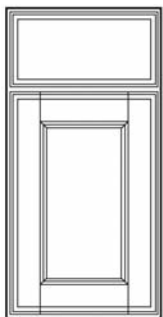
3/4" kiln dried cherry frame with solid cherry raised square panel. Full overlay door with french cut stile and rail. 5 piece french cut mitered recessed panel drawer head

**ACCEPTING ORDERS AFTER
NOVEMBER 1, 2014**

Oxford Cherry

HAMPTON CHERRY (HC)

PRICING COLUMN 6



3/4" kiln dried cherry frame 3-ply cherry plywood flat panel insert. Full overlay door with 3" stile and rail.

*Optional 5-Piece Drawer Front
Hampton Cherry*



3/4" kiln dried cherry frame with solid cherry reversed raised square panel.

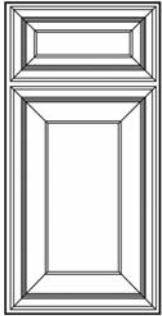
Hampton Cherry

Door Styles

Hand samples showing frame, door and drawer fronts available in all styles. Order HS12.

NASSAU CHERRY (NY)

PRICING COLUMN 9

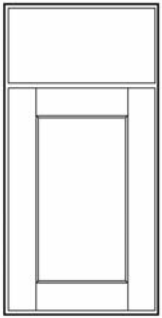


$\frac{3}{4}$ " kiln dried cherry frame
3-ply cherry plywood flat
panel insert. Full overlay.
5 piece mitered recessed
panel drawer head.

Nassau Cherry

ARTS & CRAFTS CHERRY (CC)

PRICING COLUMN 6



$\frac{3}{4}$ " kiln dried cherry frame
3-ply cherry plywood flat
panel insert. Full overlay.

Arts & Crafts Cherry

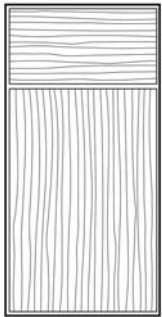
Optional 5-Piece Drawer Front
Arts & Crafts Cherry



$\frac{3}{4}$ " kiln dried cherry frame
with solid cherry reversed
raised square panel.

PARK AVENUE CHERRY (RY)

PRICING COLUMN 9

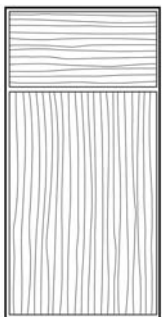


$\frac{3}{4}$ " kiln dried solid cherry,
slab full overlay door.

Park Avenue Cherry

MANHATTAN CHERRY (MC)

PRICING COLUMN 8



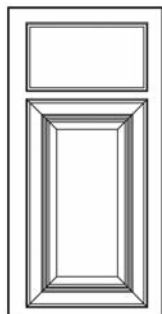
$\frac{3}{4}$ " kiln dried, rift sawn cherry veneer,
slab full overlay door.
Solid wood edge.

Manhattan Cherry

Hand samples showing frame, door and drawer fronts available in all styles. Order HS12.

MANOR HOUSE CHERRY (MH)

PRICING COLUMN 6

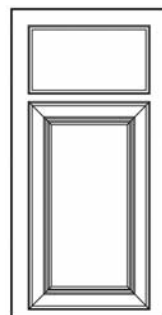


$\frac{3}{4}$ " kiln dried mitered cherry
frame with square raised
panel insert made of cherry
vener. Traditional
overlay.

Manor House Cherry

BEACON HILL CHERRY (BH)

PRICING COLUMN 3



$\frac{3}{4}$ " kiln dried mitered cherry
frame 3-ply cherry plywood
flat panel insert. Traditional
overlay.

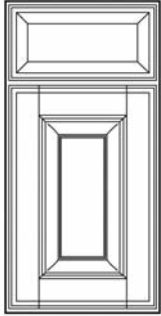
Beacon Hill Cherry

Door Styles

Hand samples showing frame, door and drawer fronts available in all styles. Order HS12.

LANCASTER MAPLE (LA)

PRICING COLUMN 11

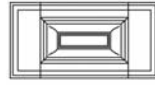


Lancaster Maple



$\frac{3}{4}$ " kiln dried maple frame with solid hard maple raised panel insert. Full overlay door with 3" stile and rail. 1" drawer head. Maple doors with premium painted finishes will receive MDF center panels. This is to reduce expansion and contraction typically due to changes in climate conditions.

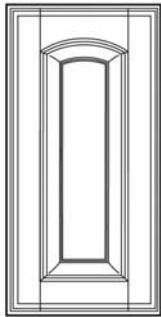
Optional 5-Piece Drawer Front Lancaster Maple



$\frac{3}{4}$ " kiln dried maple frame with solid maple raised square panel.

COVINGTON MAPLE (CN)

PRICING COLUMN 13



Covington Maple

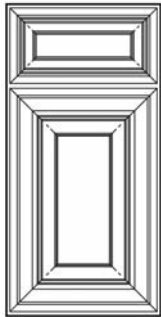


$\frac{3}{4}$ " kiln dried maple frame with solid hard maple soft arch style raised panel insert. Full overlay door with 3" stile and rail. Maple doors with premium painted finishes will receive MDF center panels. This is to reduce expansion and contraction typically due to changes in climate conditions.

Wall cabinets feature arch only. Order Lancaster Base cabinets.

FAIRFIELD MAPLE (FA)

PRICING COLUMN 14



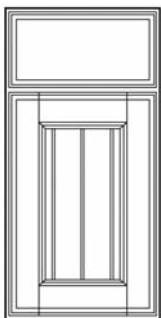
Fairfield Maple



$\frac{3}{4}$ " kiln dried maple frame with solid hard maple raised panel insert. Full overlay mitered door. 5 piece mitered raised panel drawer head. Maple doors with premium painted finishes will receive MDF center panels. This is to reduce expansion and contraction typically due to changes in climate conditions.

COTTAGE MAPLE (TM)

PRICING COLUMN 11



Cottage Maple

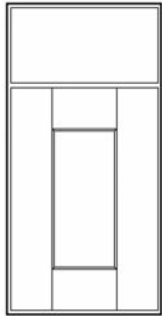


$\frac{3}{4}$ " kiln dried maple frame with solid maple reversed raised square panel with bead insert. Full overlay door with 3" stile and rail. Maple doors with premium painted finishes will receive MDF center panels. This is to reduce expansion and contraction typically due to changes in climate conditions.

Hand samples showing frame, door and drawer fronts available in all styles. Order HS12.

MISSION MAPLE (MI)

PRICING COLUMN 10



Mission Maple

$\frac{3}{4}$ " kiln dried maple frame with solid maple reversed raised square panel. Full overlay door with $3\frac{1}{2}$ " stile and rail. Maple doors with premium painted finishes will receive MDF center panels. This is to reduce expansion and contraction typically due to changes in climate conditions.

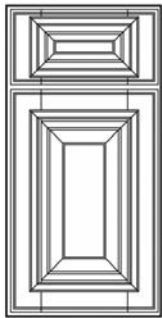
Optional 5-Piece Drawer Front Mission Maple



$\frac{3}{4}$ " kiln dried maple frame with solid maple reversed raised square panel. **Add \$22.00 List per Drawer**

PRESCOT MAPLE (PT)

PRICING COLUMN 14

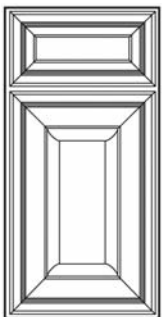


Prescot Maple

$\frac{3}{4}$ " kiln dried maple frame with solid hard maple raised square panel. Full overlay 3 " stile and rail with applied moulding. 5 piece raised panel drawer head. Maple doors with premium painted finishes will receive MDF center panels. This is to reduce expansion and contraction typically due to changes in climate conditions.

SARATOGA MAPLE (SG)

PRICING COLUMN 12

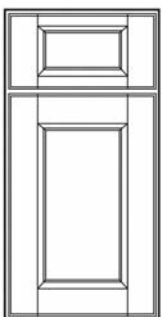


Saratoga Maple

$\frac{3}{4}$ " kiln dried maple frame with solid maple raised square panel insert. Full overlay mitered door. 5 piece mitered recessed panel drawer head. Maple doors with premium painted finishes will receive MDF center panels. This is to reduce expansion and contraction typically due to changes in climate conditions.

WAKEFIELD MAPLE (WA)

PRICING COLUMN 9



Wakefield Maple

$\frac{3}{4}$ " kiln dried maple frame with 3-ply maple plywood flat panel insert. Full overlay door with long inside profile. 5 piece recessed panel drawer head. Maple doors with premium painted finishes will receive MDF center panels. This is to reduce expansion and contraction typically due to changes in climate conditions.

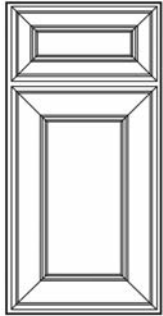
**ACCEPTING ORDERS AFTER
SEPTEMBER 15, 2014**

Door Styles

Hand samples showing frame, door and drawer fronts available in all styles. Order HS12.

DOVER MAPLE (DO)

PRICING COLUMN 9



Dover Maple

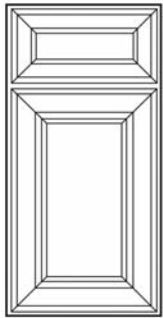


$\frac{3}{4}$ " kiln dried maple frame with 3-ply maple plywood flat panel insert. Full overlay door with mitered double bead stile and rail. 5 piece mitered recessed panel drawer head. Maple doors with premium painted finishes will receive MDF center panels. This is to reduce expansion and contraction typically due to changes in climate conditions.

**ACCEPTING ORDERS AFTER
SEPTEMBER 15, 2014**

GEORGETOWN MAPLE (GE)

PRICING COLUMN 14



Georgetown Maple

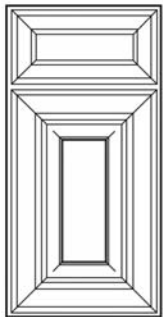


$\frac{3}{4}$ " kiln dried maple frame with solid maple reversed raised square panel. Full overlay door with mitered pillow stile and rail. 5 piece mitered recessed panel drawer head. Maple doors with premium painted finishes will receive MDF center panels. This is to reduce expansion and contraction typically due to changes in climate conditions.

**ACCEPTING ORDERS AFTER
DECEMBER 1, 2014**

LEXINGTON MAPLE (LE)

PRICING COLUMN 14



Lexington Maple

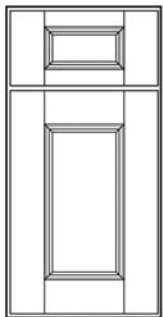


$\frac{3}{4}$ " kiln dried maple frame with solid maple raised panel insert. Full overlay door with mitered pillow stile and rail. 5 piece mitered recessed panel drawer head. Maple doors with premium painted finishes will receive MDF center panels. This is to reduce expansion and contraction typically due to changes in climate conditions.

**ACCEPTING ORDERS AFTER
DECEMBER 1, 2014**

ESSEX MAPLE (ES)

PRICING COLUMN 15



Essex Maple



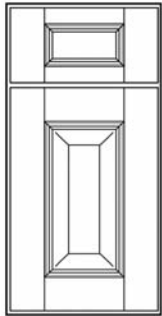
$\frac{3}{4}$ " kiln dried maple frame with solid maple reversed raised square panel. Full overlay door with french cut stile and rail. 5 piece french cut mitered recessed panel drawer head. Maple doors with premium painted finishes will receive MDF center panels. This is to reduce expansion and contraction typically due to changes in climate conditions.

**ACCEPTING ORDERS AFTER
NOVEMBER 1, 2014**

Hand samples showing frame, door and drawer fronts available in all styles. Order HS12.

OXFORD MAPLE (OX)

PRICING COLUMN 15



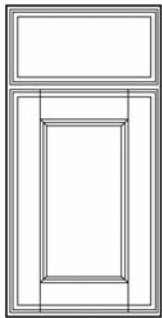
Oxford Maple

3/4" kiln dried maple frame with solid maple raised square panel. Full overlay door with french cut stile and rail. 5 piece french cut mitered recessed panel drawer head. Maple doors with premium painted finishes will receive MDF center panels. This is to reduce expansion and contraction typically due to changes in climate conditions.

ACCEPTING ORDERS AFTER NOVEMBER 1, 2014

HAMPTON MAPLE (HM)

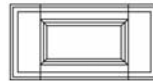
PRICING COLUMN 6



Hampton Maple

3/4" kiln dried maple frame 3-ply maple plywood flat panel insert. Full overlay door with 3" stile and rail. Maple doors with premium painted finishes will receive MDF center panels. This is to reduce expansion and contraction typically due to changes in climate conditions.

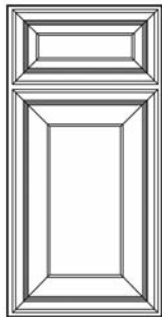
Optional 5-Piece Drawer Front Hampton Maple



3/4" kiln dried maple frame with solid maple reversed raised square panel.

NASSAU MAPLE (NS)

PRICING COLUMN 9

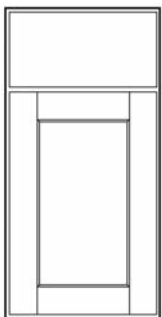


Nassau Maple

3/4" kiln dried maple frame 3-ply maple plywood flat panel insert. Full overlay. 5 piece mitered recessed panel drawer head. Maple doors with premium painted finishes will receive MDF center panels. This is to reduce expansion and contraction typically due to changes in climate conditions.

ARTS & CRAFTS MAPLE (AR)

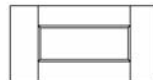
PRICING COLUMN 6



Arts & Crafts Maple

3/4" kiln dried maple frame 3-ply maple plywood flat panel insert. Full overlay. Maple doors with premium painted finishes will receive MDF center panels. This is to reduce expansion and contraction typically due to changes in climate conditions.

Optional 5-Piece Drawer Front Arts & Crafts Maple



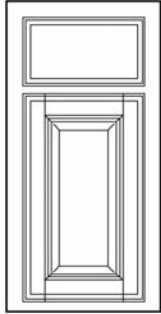
3/4" kiln dried maple frame with solid maple reversed raised square panel.

Door Styles

Hand samples showing frame, door and drawer fronts available in all styles. Order HS12.

MADISON MAPLE (MA)

PRICING COLUMN 6

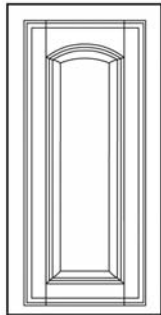


$\frac{3}{4}$ " kiln dried maple frame with square raised panel insert made of maple veneer. Traditional overlay. Maple doors with premium painted finishes will receive MDF center panels. This is to reduce expansion and contraction typically due to changes in climate conditions.

Madison Maple

SPRINGFIELD MAPLE (SP)

PRICING COLUMN 7



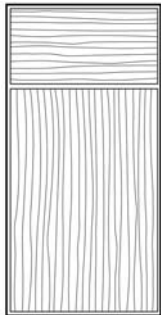
$\frac{3}{4}$ " kiln dried maple frame with soft arch raised panel insert made of maple veneer. Traditional overlay. Maple doors with premium painted finishes will receive MDF center panels. This is to reduce expansion and contraction typically due to changes in climate conditions.

Springfield Maple

**Wall cabinets feature arch only.
Order Madison Base cabinets.**

PARK AVENUE MAPLE (RP)

PRICING COLUMN 8

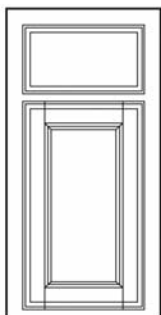


$\frac{3}{4}$ " kiln dried solid maple, slab full overlay door.

Park Avenue Maple

SHERWOOD MAPLE (SW)

PRICING COLUMN 3



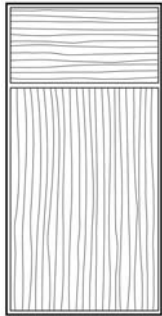
$\frac{3}{4}$ " kiln dried maple frame 3-ply maple plywood flat panel insert. Traditional overlay. Maple doors with premium painted finishes will receive MDF center panels. This is to reduce expansion and contraction typically due to changes in climate conditions.

Sherwood Maple

Hand samples showing frame, door and drawer fronts available in all styles. Order HS12.

MANHATTAN MAPLE (MT)

PRICING COLUMN 5



*3/4" kiln dried, rift sawn maple veneer,
slab full overlay door.
Solid wood edge.*

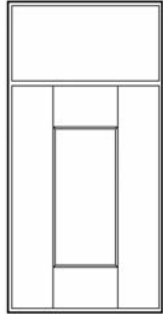
Manhattan Maple

Door Styles

Hand samples showing frame, door and drawer fronts available in all styles. Order HS12.

MISSION 1/4 SAWN OAK (MK)

PRICING COLUMN 12



3/4" kiln dried 1/4 sawn oak frame with solid 1/4 sawn oak reversed raised square panel. Full overlay door with 3 1/2" stile and rail.

Optional 5-Piece Drawer Front Mission 1/4 Sawn Oak



3/4" kiln dried 1/4 sawn oak frame with solid 1/4 sawn oak reversed raised square panel.

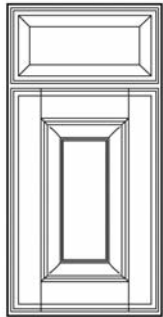
Add \$22.00 List per Drawer

ACCEPTING ORDERS AFTER SEPTEMBER 15, 2014

Mission 1/4 Sawn Oak

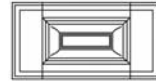
BRENTWOOD OAK (BD)

PRICING COLUMN 5



3/4" kiln dried oak frame with solid oak raised panel insert. Full overlay door with 3" stile and rail. 1" drawer head.

Optional 5-Piece Drawer Front Brentwood/Murray Hill Oak

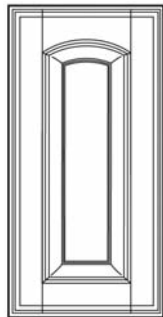


3/4" kiln dried oak frame with solid oak raised square panel.

Brentwood Oak

MURRAY HILL OAK (MR)

PRICING COLUMN 7



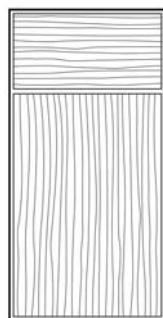
3/4" kiln dried oak frame with solid oak soft arch style raised panel insert. Full overlay door with 3" stile and rail. 1" drawer head.

Wall cabinets feature arch only. Order Brentwood Base cabinets.

Murray Hill Oak

PARK AVENUE OAK (RK)

PRICING COLUMN 8



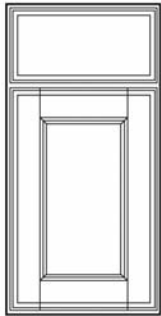
3/4" kiln dried solid oak, slab full overlay door.

Park Avenue Oak

Hand samples showing frame, door and drawer fronts available in all styles. Order HS12.

HAMPTON OAK (HO)

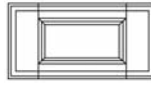
PRICING COLUMN 2



$\frac{3}{4}$ " kiln dried white oak frame with 3-ply oak plywood flat panel insert. Full overlay door with 3" stile and rail.

Hampton Cherry

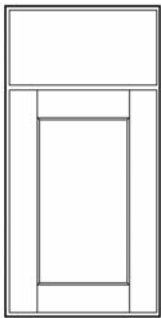
Optional 5-Piece Drawer Front Hampton Oak



$\frac{3}{4}$ " kiln dried white oak frame with solid oak reversed raised square panel.

ARTS & CRAFTS 1/4 SAWN OAK (OA)

PRICING COLUMN 3



$\frac{3}{4}$ " kiln dried 1/4 sawn oak frame, 3-ply oak 1/4 sawn plywood flat panel insert. Full overlay.

Arts & Crafts 1/4 Sawn Oak

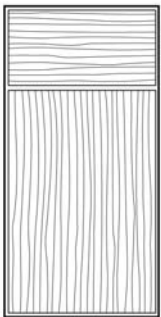
Optional 5-Piece Drawer Front Arts & Crafts 1/4 Sawn Oak



$\frac{3}{4}$ " kiln dried 1/4 sawn oak frame with 1/4 sawn oak plywood flat panel insert.

MANHATTAN OAK (MO)

PRICING COLUMN 5



$\frac{3}{4}$ " kiln dried, rift sawn oak veneer, slab full overlay door. Solid wood edge.

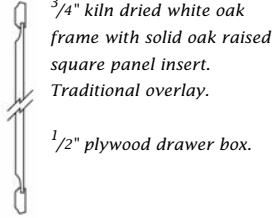
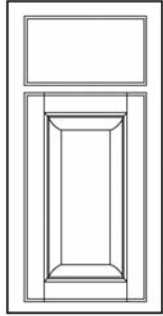
Manhattan Oak

Door Styles

Hand samples showing frame, door and drawer fronts available in all styles. Order HS12.

HERMITAGE OAK (HE)

PRICING COLUMN 4

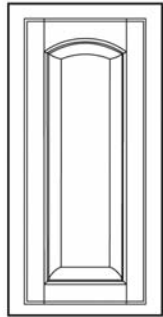


*3/4" kiln dried white oak
frame with solid oak raised
square panel insert.
Traditional overlay.
1/2" plywood drawer box.*

Hermitage Oak

MT. VERNON OAK (MV)

PRICING COLUMN 4



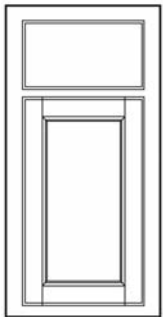
*3/4" kiln dried white oak
frame with solid oak soft
arch style raised panel insert.
Traditional overlay.
1/2" plywood drawer box.*

**Wall cabinets feature arch only.
Order Hermitage Base cabinets.**

Mt. Vernon Oak

VALLEY OAK (VA)

PRICING COLUMN 1



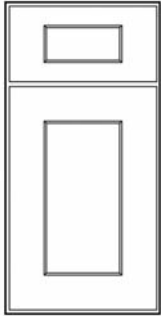
*3/4" kiln dried white oak
frame with 3-ply oak
plywood flat panel insert.
Traditional overlay.
1/2" plywood drawer box.*

Valley Oak

Hand samples showing frame, door and drawer fronts available in all styles. Order HS12.

SEABROOK WHITE (SB)

PRICING COLUMN 9

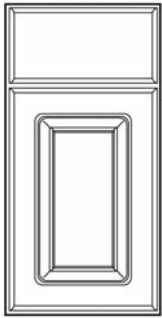


$\frac{3}{4}$ " medium density fiberboard with rigid thermofoil (RTF) vinyl lamination. Arts & Crafts style recessed panel. Full overlay.

Seabrook

ALPINE WHITE (AO)

PRICING COLUMN 4



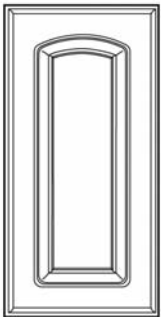
$\frac{3}{4}$ " medium density fiberboard with rigid thermofoil (RTF) vinyl lamination, raised panel. Full overlay.

Alpine

$\frac{1}{2}$ " plywood drawer box.

SIERRA WHITE (SO)

PRICING COLUMN 4



$\frac{3}{4}$ " medium density fiberboard with rigid thermofoil (RTF) vinyl lamination, soft arch raised panel. Full overlay.

Sierra

$\frac{1}{2}$ " plywood drawer box.

Wall cabinets feature arch only.
Order Alpine Base cabinets.